



## What's new at Reach this month

December 2024



### Our 2024 Year in Review

2024 has been a busy year for us! The articles below share updates about our accomplishments, new leadership, and other big developments as the year draws to a close.

**Your support helps make this work possible. Make an end of the year donation to impact the underserved in our community!**

[Donate](#)

### Our Impact: Reach's service areas in 2024

This year, our five service areas supported several thousand county residents. Learn about this impact and how we adapted to client needs.



[Read More](#)



**An interview with  
Judy Ackerman, Board  
Chair**

### Employee Spotlight: Maria Duarte, Front Desk at MKHC



After losing her insurance, Maria enrolled as a patient at MKHC. Now she works as a receptionist at the front desk.

[Read More](#)

Reach's board chair, Judy Ackerman, might be new to that position, but she's not new to the organization. She answered some questions about her history with Reach, priorities as chair, and what she finds meaningful about the work.

[Read More](#)

### Client Story: Ms. D, Behavioral Health at MKHC



After anxiety and depression impacted her quality of life, Ms. D started seeing a counselor at MKHC to improve her mental health.

[Read More](#)



### December Holiday Giving is this week

Our December Holiday Giving Project distribution is this week. Thank you to the students from Holton-Arms School (pictured) for helping us sort the toys this weekend, and to all the volunteers who helped us on Thursday for the first distribution event.

Reach has agreed to provide meals to 171 families and toys for close to 400 children this year, and we couldn't do it without the help of our supporters!



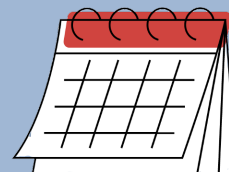
### Did you know you can donate to Reach through the Combined Federal Campaign (CFC)?

Are you a Federal employee or retiree? Then GIVE HAPPY to us through the CFC using charity code **34303**. One of the great benefits of the CFC is that you can give through payroll deduction or through your retiree annuity, giving a little each pay period and supporting our mission all year long. Visit the CFC website at [www.givecfc.org](http://www.givecfc.org).

### Mark Your Calendars

**Holiday Giving - December Distributions**  
Saturday, December 21st at St. Francis Episcopal Church  
10033 River Rd, Potomac, MD 20854

**REAP Benefit Concert**  
Sunday, March 9  
Rockville United Church



# Volunteer With Us

## Program Evaluators

Evaluate our programs, including providing an objective opinion on what is working well and what improvements can be made.

## Committee Members

Serve on one or more of our standing committees or ad hoc event committees.

Contribute your skills to help us continue to build a strong organization.

Contact [volunteer@cmrocks.org](mailto:volunteer@cmrocks.org) if you're able to help with these requests.

[View other volunteer opportunities](#)

## Donation Requests

### New or gently used furniture for the Housing Program:

#### *Jefferson House*

- a bedroom wardrobe
- a small desk and desk chair

#### *Rockland House*

- set of 4 metal folding chairs with 500-pound weight limit
- outdoor chairs, umbrella and stand for the deck
- a full-size headboard for a bedroom
- two air purifiers
- a new area rug for the living room

### For Kaseman Health Clinic & Housing Program:

C-Fold Paper Towels, Paper Towel Rolls, Antibacterial Hand Soap, Trash Bags, Disinfecting Wipes, Scouring Powder, Window Cleaner, Facial Tissue, Bleach, Disinfectant Spray, Dishwashing Liquid

For more information on current needs or to donate, please contact us at [development@cmrocks.org](mailto:development@cmrocks.org).

### Community Reach of Montgomery County Board of Directors

Board Chair Judy Ackerman, Treasurer Lou Kallas,  
Secretary Jim Skinner, George Ashton, Rae Pearl Canizares,  
Debra Jacobs, Jan May, Frank Nice,  
Oscar Portillo, Suzanne Rotbert, and Nancy Sushinsky  
Ex-Officio Donna Perry, Chair, MKHC Board

### MKHC Board of Directors

Chair Donna R. Perry MD, Ryan Bertoli, Douglas Brough PhD,  
Jackie Lobien RN, Susana Najera MS, Kate Stradar MBA RN,  
Stephanie Wright FNP PhD Ex-Officio Judy Ackerman, Chair, Reach Board,  
Ex-Officio Angeline Lazarus, MD, Medical Director

[Donate to support Reach](#)





Try email marketing for free today!